

NANA

CAL 2021



COTTON-MERINO FINE



CROCHET-ALONG KATIA





NANA BABY BLANKET DESIGNED BY @bykaterinadesigns

Exclusive crochet pattern for the *Crochet-Along*
Katia Facebook Group

MEASUREMENTS: Approx. 85x85 cm after blocking

MATERIALS

1 Katia Nana CAL Kit with 14 balls of Katia Cotton-Merino Fine in colors off-white 80: 5 balls
Color light lilac 86, pastel green 84, light pink 88: 3 balls of each color
US G-6/4-mm crochet hook
Tapestry needle
Scissors
Blocking pins and mats (optional)

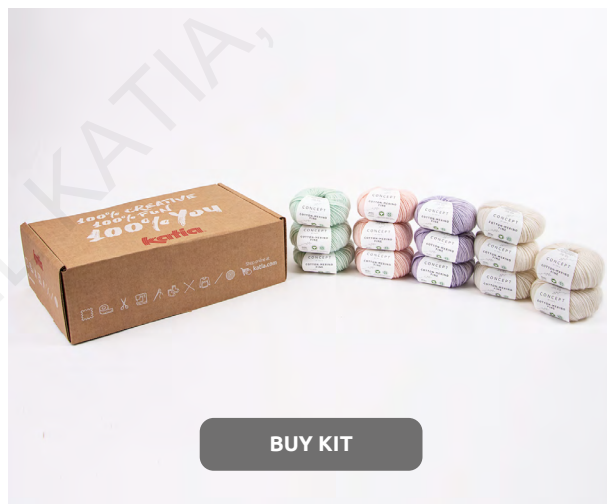
STITCHES USED

Chain, double crochet, single crochet, half double crochet, triple crochet, double triple crochet, magic ring, slip stitch

See basic stitches at www.katia.com/en/academy

FP dc: front post double crochet. Insert the hook from front to back (= in the right-hand space of a stitch) and then from back to front (= through the left-hand space of the same stitch). Double crochet 1 around this stitch.

FP tr: front post triple crochet. Insert the hook from front to back (= in the right-hand space of a stitch) and then from back to front (= through the left-hand space of the same stitch). Triple crochet 1 around this stitch.


[BUY KIT](#)

GAUGE SWATCH

1 granny square, 4-mm crochet hook
Approx. 15.5x15.5 cm after blocking

INSTRUCTIONS

The blanket consists of 25 different granny squares. The pattern is split into 5 parts, each including 5 different granny squares. Therefore, work each chart just once. The last part includes instructions on how to join the granny squares and how to make the border of the blanket.

Each part includes:

- 5 different charts with stitch key
- Step-by-step videos for each granny square

VIDEOS



Find out **how to make each granny square** in the Nana CAL on [our YouTube channel](#). Each video includes **written instructions** available in *Spanish, English, French, Dutch, German and Italian*. Just activate the **Subtitles** on YouTube to easily follow each step.

NOTAS

- Read the charts from the center outwards counterclockwise.
- Start each chart with a *magic ring*.
- End each round with 1 *slip stitch*.
- *Chain* 3 up at the beginning of *double crochet* rounds.
- *Chain* 1 up at the beginning of *single crochet* rounds.
- Cut yarns at the end of each round and change to another color, pull the cut yarn to adjust the stitch.
- Weave in the ends at the end.



PART 5

GRANNY 21

Work chart U as follows:

R1-2: Light pink

R3-4: Pastel green

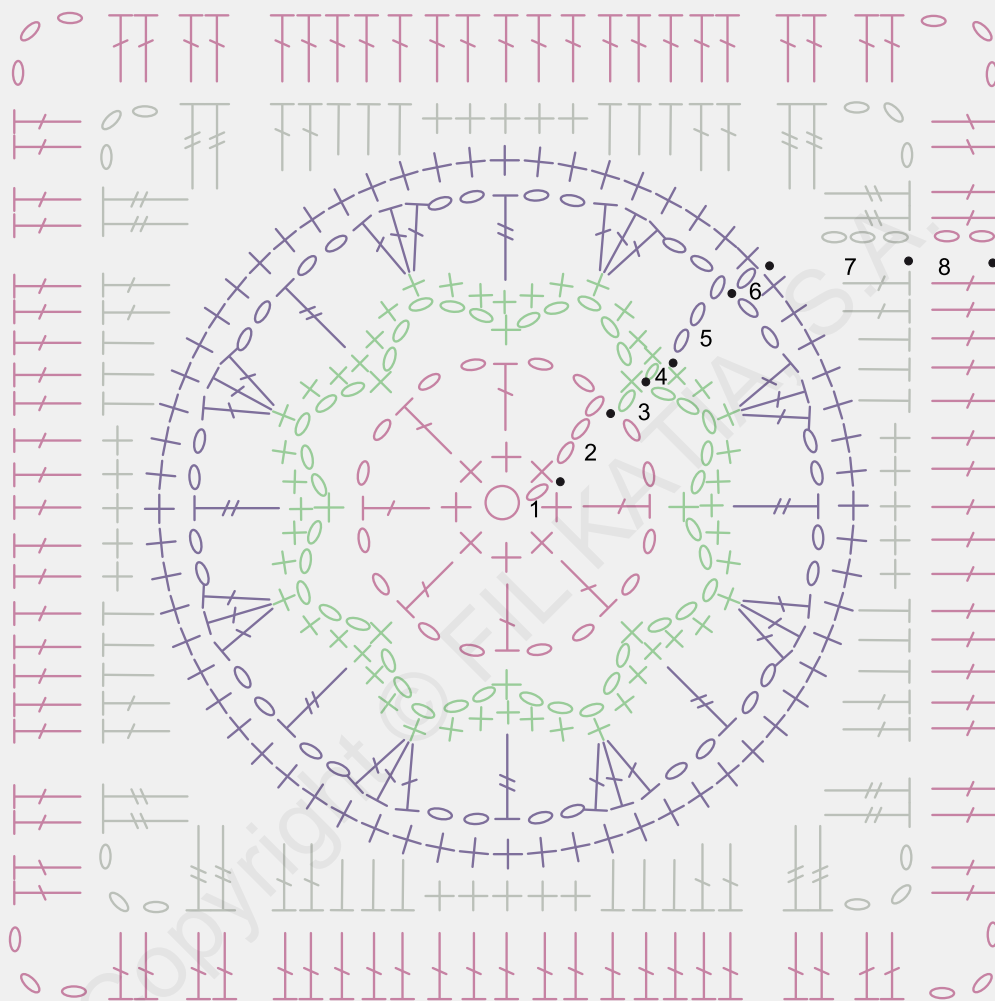
R5-6: Light lilac

R7: Off-white

R8: Light pink



CHART U



- = slip stitch 1
- = chain 1
- ⊕ = single crochet 1
- ⏏ = double crochet 1
- ⏏ = half double crochet 1

- ⏏ = triple crochet 1
- = magic ring

GRANNY 22

Work chart V as follows:

R1-2: Pastel green

R3: Light pink

R4-5: Light lilac

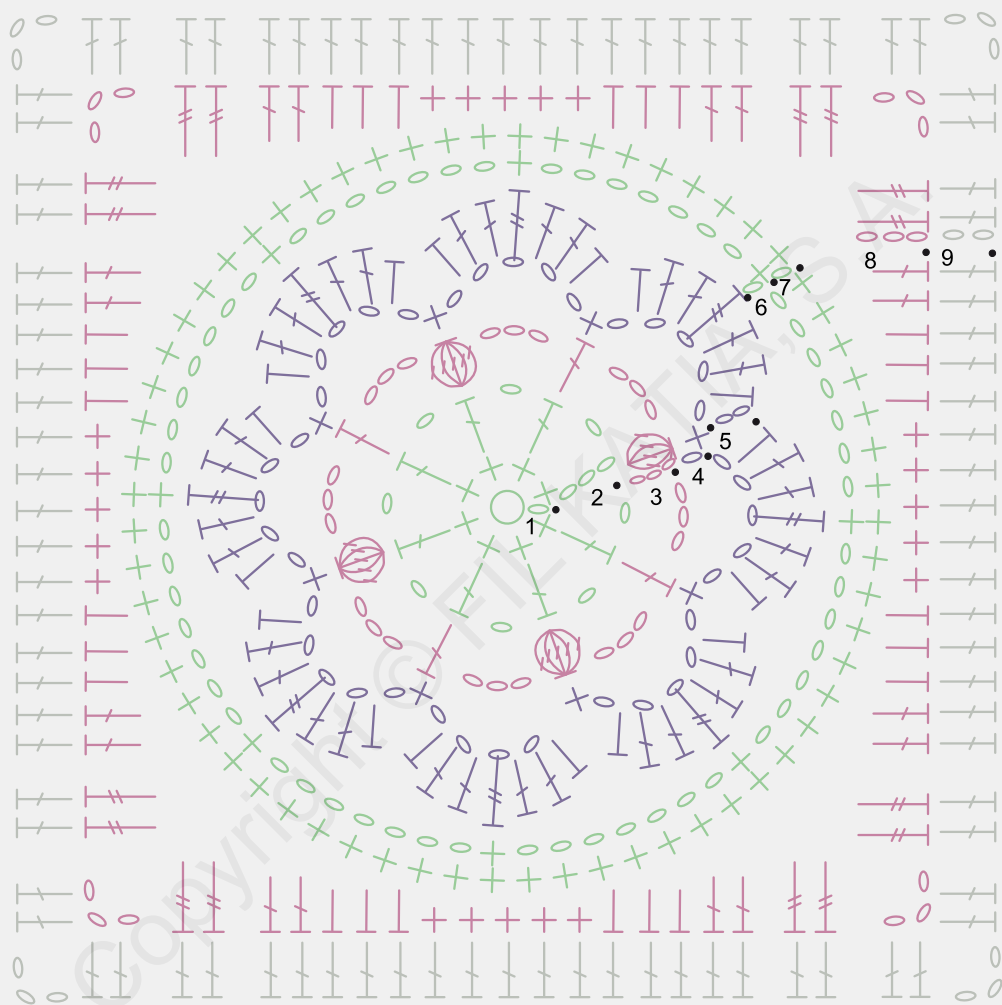
R6-7: Pastel green

R8: Light pink

R9: Off-white



CHART V



- = slip stitch 1
- = chain 1
- ⊕ = single crochet 1
- ⌈ = double crochet 1
- ⌋ = half double crochet 1

- ⌋ = triple crochet 1
- ⊗ = bobble 1: double crochet 5 into same stitch and close together
- = magic ring

GRANNY 23

Work chart X as follows:

R1-2: Off-white

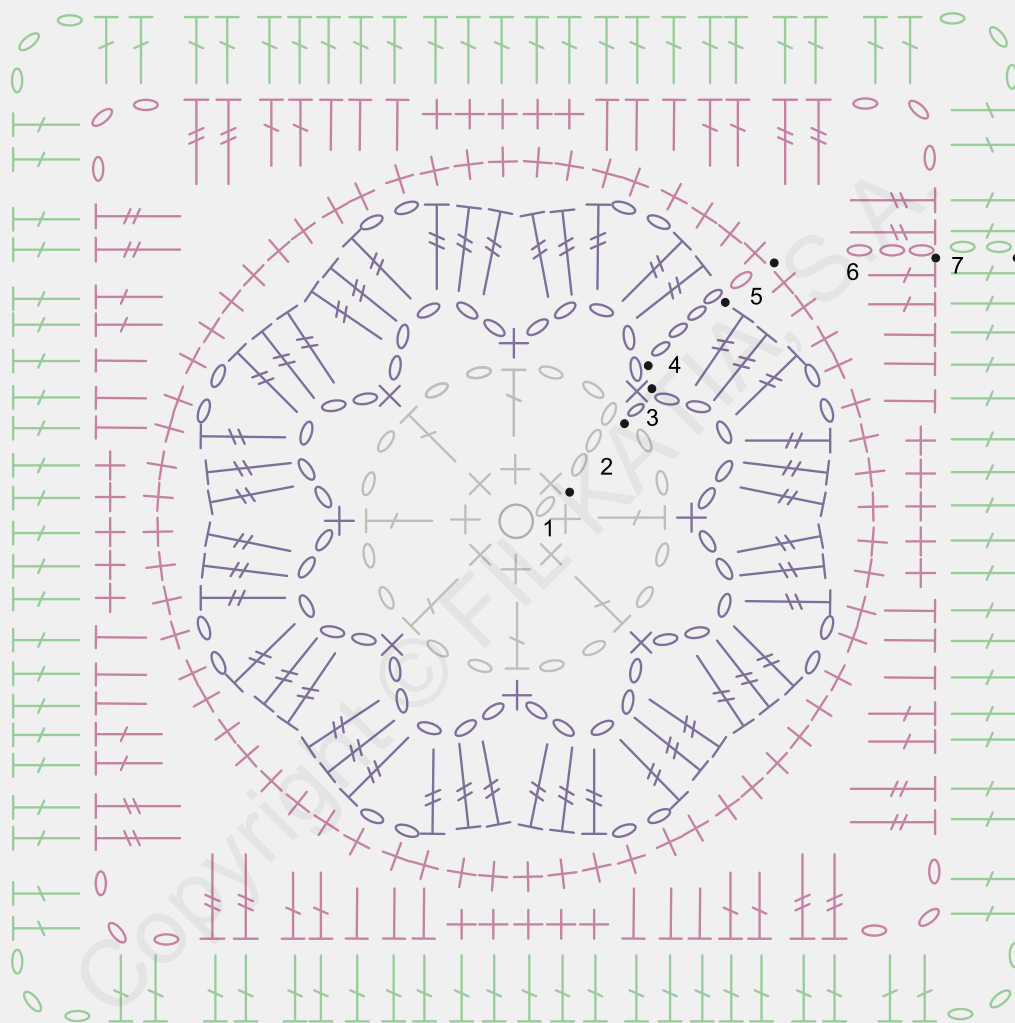
R3-4: Light lilac

R5-6: Light pink

R7: Pastel green



CHART X



- = slip stitch 1
- = chain 1
- ⊕ = single crochet 1
- ⌈ = double crochet 1
- ⌋ = half double crochet 1

- ⌈⌋ = triple crochet 1
- = magic ring

GRANNY 24

Work chart Y as follows:

R1-2: Light pink

R3-4: Pastel green

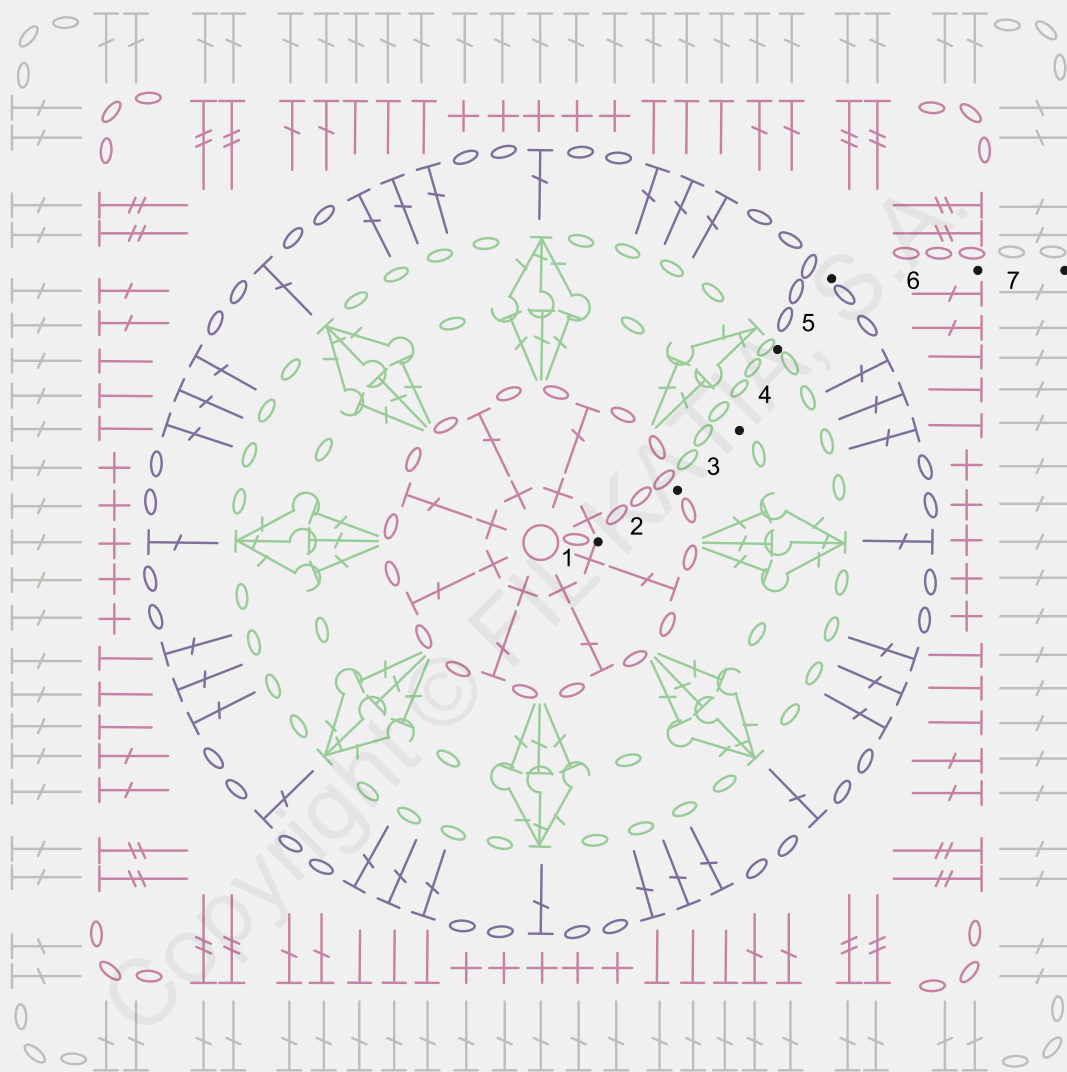
R5: Light lilac

R6: Light pink

R7: Off-white



CHART Y



- = slip stitch 1
- = chain 1
- + = single crochet 1
- T = double crochet 1
- T = half double crochet 1
- T = triple crochet 1
- ⌞ = front post double crochet 3 closed together
- = magic ring

GRANNY 25

Work chart Z as follows:

R1-2: Light pink

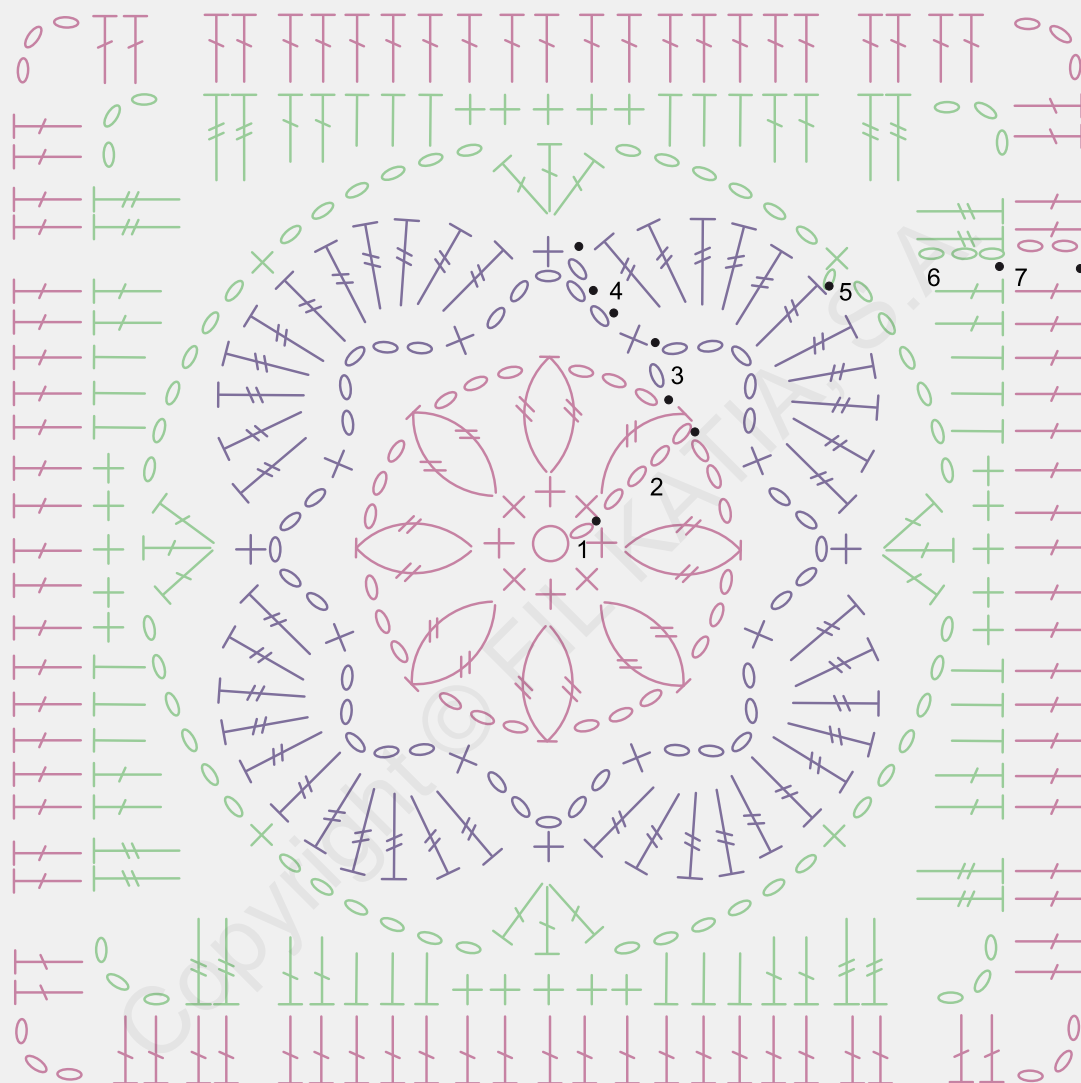
R3-4: Light lilac

R5-6: Pastel green

R7: Light pink



CHART Z



- = slip stitch 1
- = chain 1
- + = single crochet 1
- T = double crochet 1
- T = half double crochet 1
- T = triple crochet 1
- ⌢ = triple crochet 2 into same stitch and close together
- = magic ring

ASSEMBLY

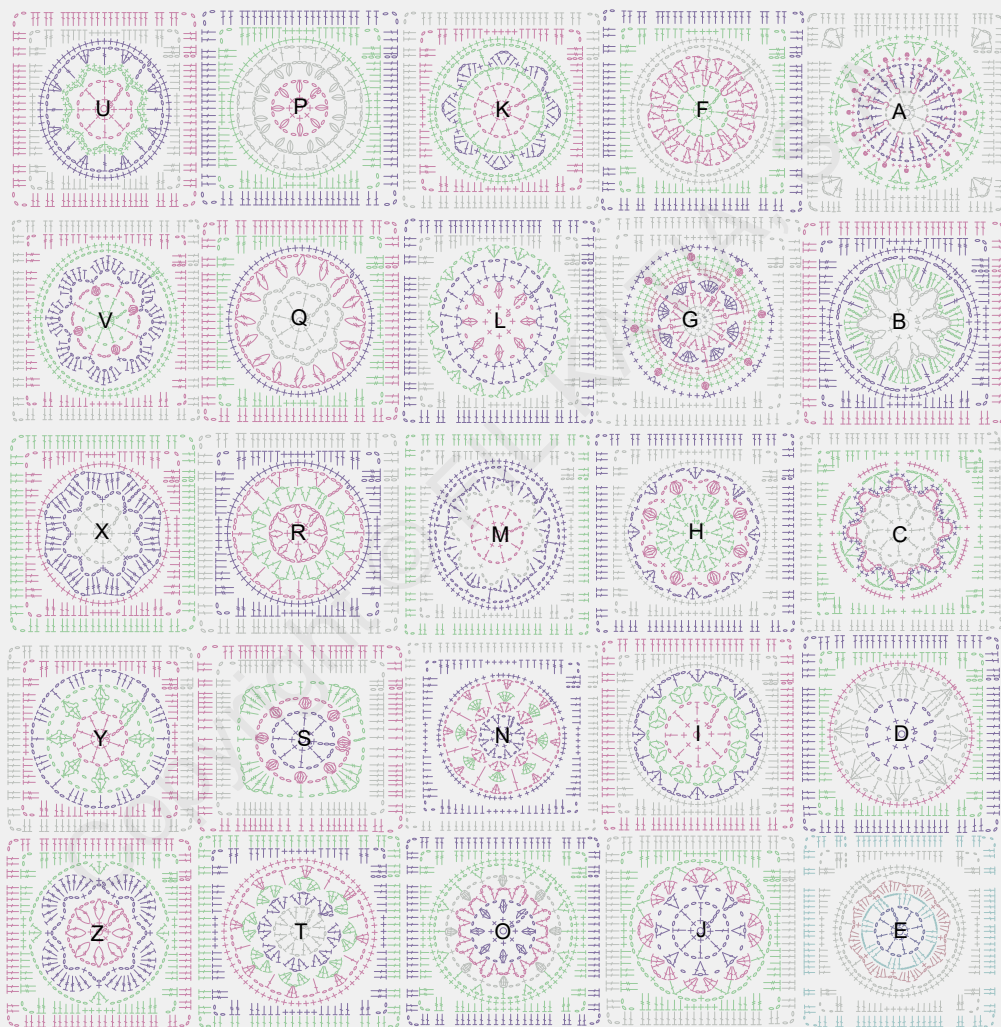
Block all the *granny squares*, making sure they are the same size.

Once blocked, follow the order of chart 1.

Note: We suggest this order to create your *Nana* blanket, but you can play with the layout of your grannies to achieve a different result.



CHART 1



JOIN

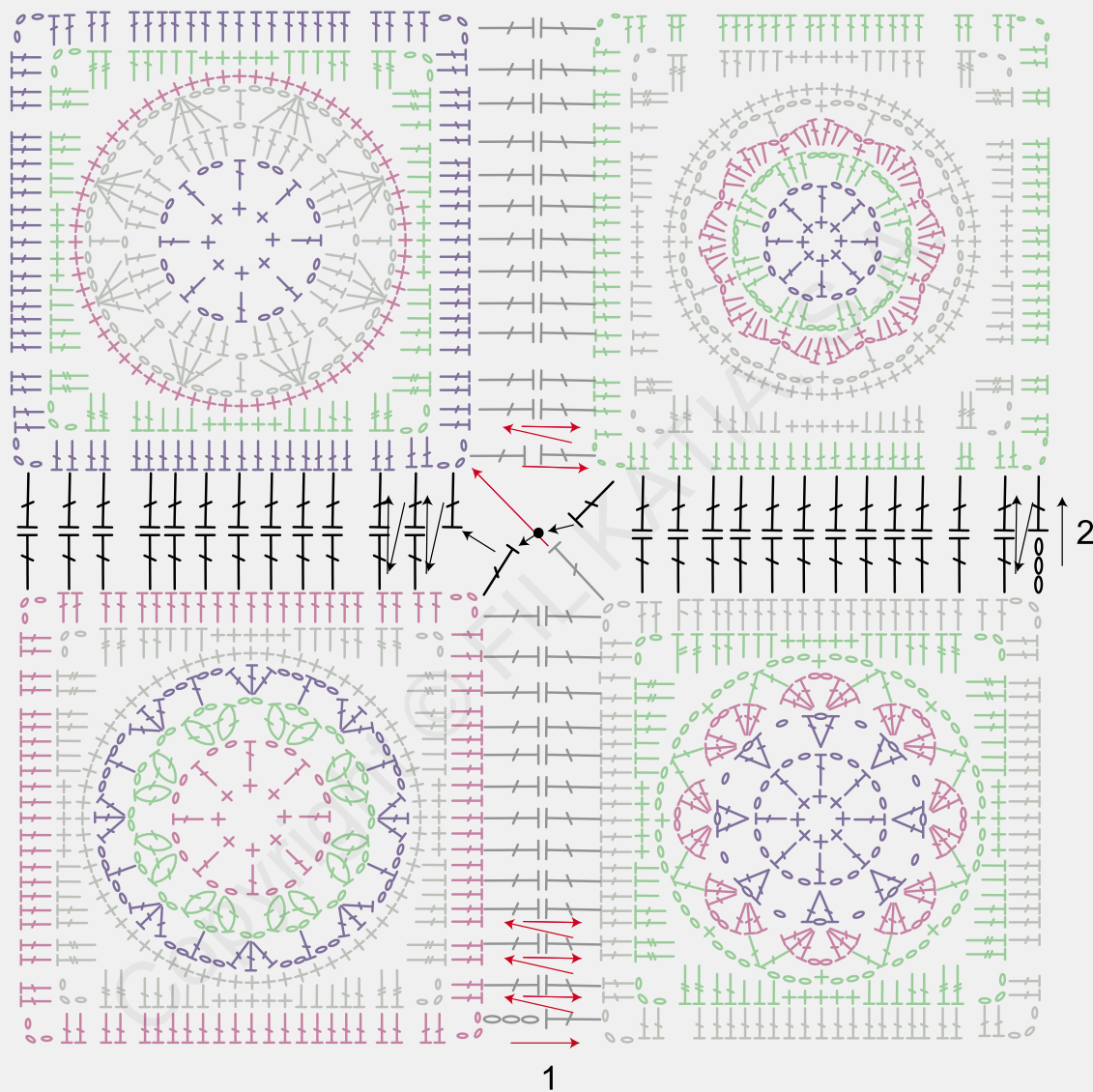
Join the grannies with the off-white color, following chart 2.

First **join** the grannies vertically, then horizontally.

Note: the chain up stitches from the last round of each granny do not count as a stitch for the join, so do not work them.



CHART 2



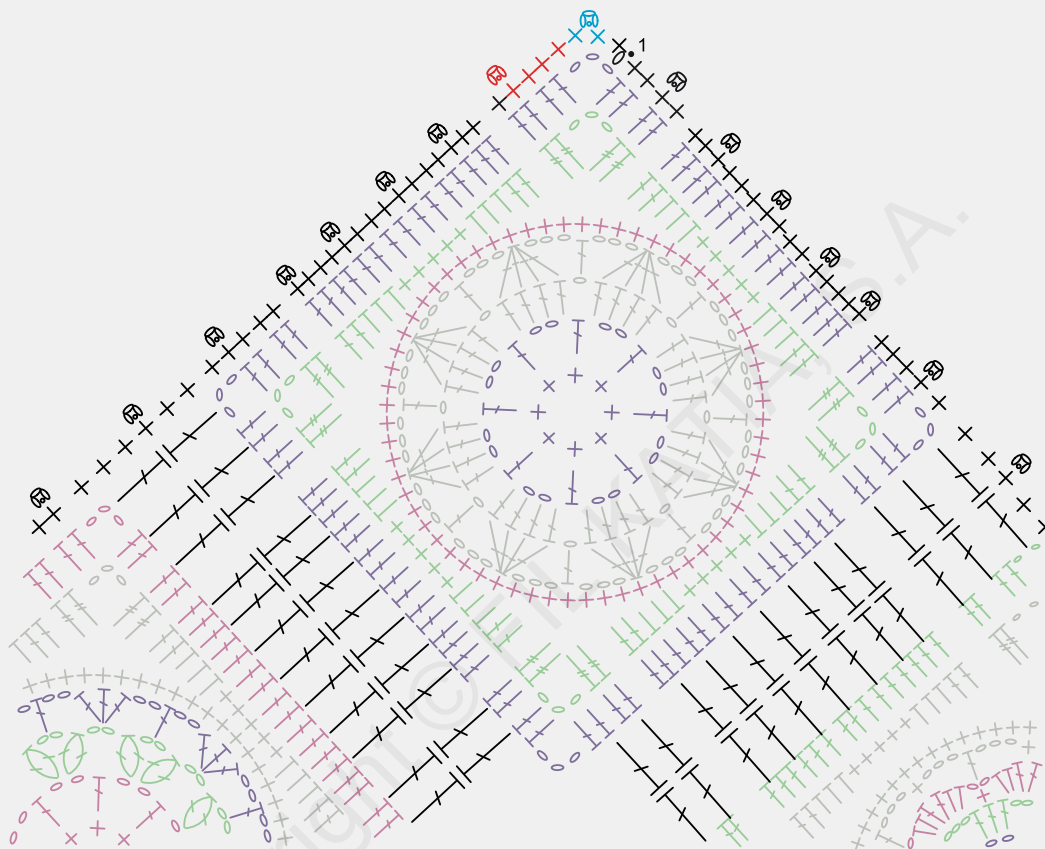
- 1 = vertical join
- 2 = horizontal join
- = slip stitch 1
- = chain 1
- ⌋ = double crochet 1

BORDER

Follow chart 3 for the border (= R1) around the blanket in the off-white color.



CHART 3



- = slip stitch 1
- = chain 1
- ⊕ = single crochet 1
- Ⓢ = picot 1: chain 3 and slip stitch 1 into the base of the single crochet
- ⓈⓈ = on the corners, single crochet 1, picot 1, single crochet 1

FINISHES

Weave in and cut any loose ends.

Block the blanket to even out the stitches, define the shape and achieve the desired size.

Optional: Sew a fabric lining to the wrong side of the blanket.

We recommend the following patterned fabrics from the new **Katia Fabrics** collection...

MOUSSELINE



POLAR ICE HAZE



POPELIN



JERSEY

