

LES PETITES CHOSSES

KAL 2021

Katia



MISSOURI



80x85 CM



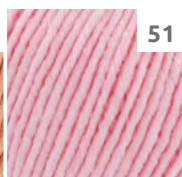
KNIT-ALONG KATIA



1



50



51



52



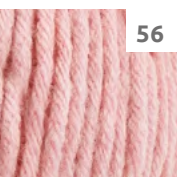
53



54



55



56

2nd PART

Note: You will be working 3 graphs: D, E and F.

Change to light pink and continue to work in *Openwork diamond pattern* following graph D, as follows:

1st row: knit across entire row

2nd row: purl across entire row

3rd row: K1 * K4, K2 tog, 1 YO, K1 * repeat from * to *, until 6 sts remain, then K6

4th row: purl across entire row

5th row: K1 * K3, K2 tog, 1 YO, K2 tog, 1 YO, * repeat from * to *, until 6 sts remain, then K6

6th row: purl across entire row

7th row: K1 * K4, K2 tog, 1 YO, K1 * repeat from * to *, until 6 sts remain, then K6

8th row: purl across entire row

Change to to mandarin and white and continue to work in *Jacquard pattern* following graph E, as follows:

1st row: knit across entire row working * 2 sts using mandarin, 2 sts using white * repeat from * to *.

2nd row: purl across entire row working * 2 sts using white, 2 sts using mandarin * repeat from * to *.

3rd row: knit across entire row working * 2 sts using mandarin, 2 sts using white * repeat from * to *.

4th row: purl across entire row working * 2 sts using mandarin, 2 sts using white * repeat from * to *.

5th row: knit across entire row working * 2 sts using white, 2 sts using mandarin * repeat from * to *.

6th row: purl across entire row working * 2 sts using mandarin, 2 sts using white * repeat from * to *.

7th row: knit across entire row working * 2 sts using mandarin, 2 sts using white * repeat from * to *.

8th row: purl across entire row working * 2 sts using white, 2 sts using mandarin * repeat from * to *.

9th row: knit across entire row working * 2 sts using mandarin, 2 sts using white * repeat from * to *.

Change to dark green and continue to work in *Bell st* following graph F, as follows:

Note: Start working this graph on the wrong side row.

1st, 2nd and 3rd row: purl across entire row.

4th row: K1, * P2, K2, P2, K1 * repeat from * to * until 6 sts remain, then P2, K2, P2.

5th row: K2, P2, K2, * P1, K2, P2, K2 * repeat from * to *, until 1 st remains, then P1.

6th row: K1, * P2, K2, P2, work 6 sts into 1 st (= K1, P1, K1, P1, K1, P1), * repeat from * to * until 6 sts remain, then P2, K2, P2.

7th row: K2, P2, K2, * P6, K2, P2, K2 * repeat from * to *, until 1 st remains, then P1.

8th row: K1, * P2, K2, P2, K6 * repeat from * to * until 6 sts remain, then P2, K2, P2.

9th row: K2, P2, K2, * P6, K2, P2, K2 * repeat from * to *, until 1 st remains, then P1.

10th row: K1, * P2, K2, P2, Single decrease, K2, K2 tog * repeat from * to * until 6 sts remain, then P2, K2, P2

11th row: K2, P2, K2, * P4, K2, P2, K2 * repeat from * to *, until 1 st remains, then P1.

12th row: K1, * P2, K2, P2, Single decrease, K2 tog * repeat from * to * until 6 sts remain, then P2, K2, P2

13th row: K2, P2, K2, * P2, K2, P2, K2 * repeat from * to *, until 1 st remains, then P1.

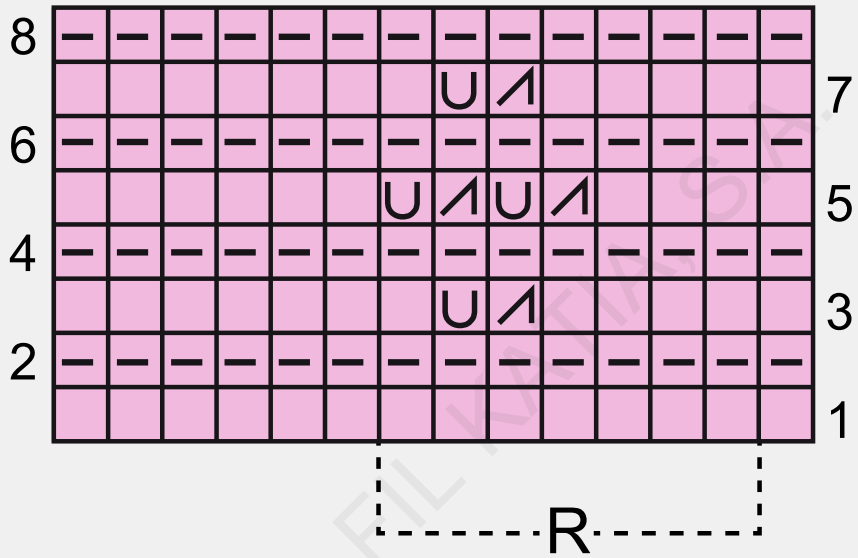
14th row: K1, * P2, K2, P2, Single decrease * repeat from * to * until 6 sts remain, then P2, K2, P2

15th row: K2, P2, K2, * K3, P2, K2 * repeat from * to *, until 1 st remains, then P1.

16th and 17th row: knit across.



GRAPH D



R Repeat

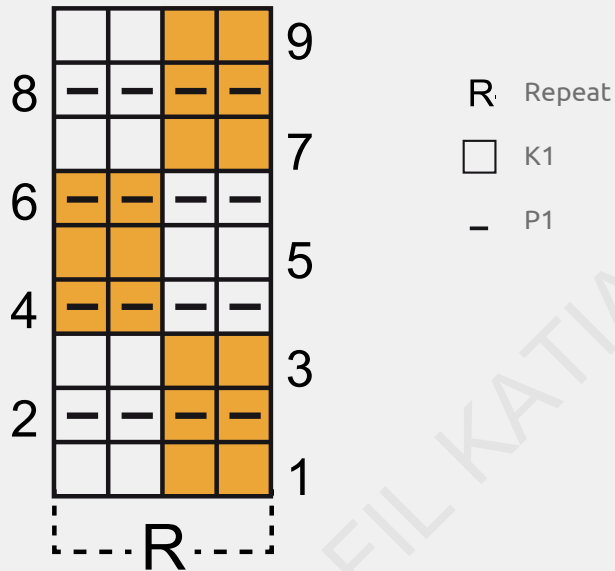
□ K1

- P1

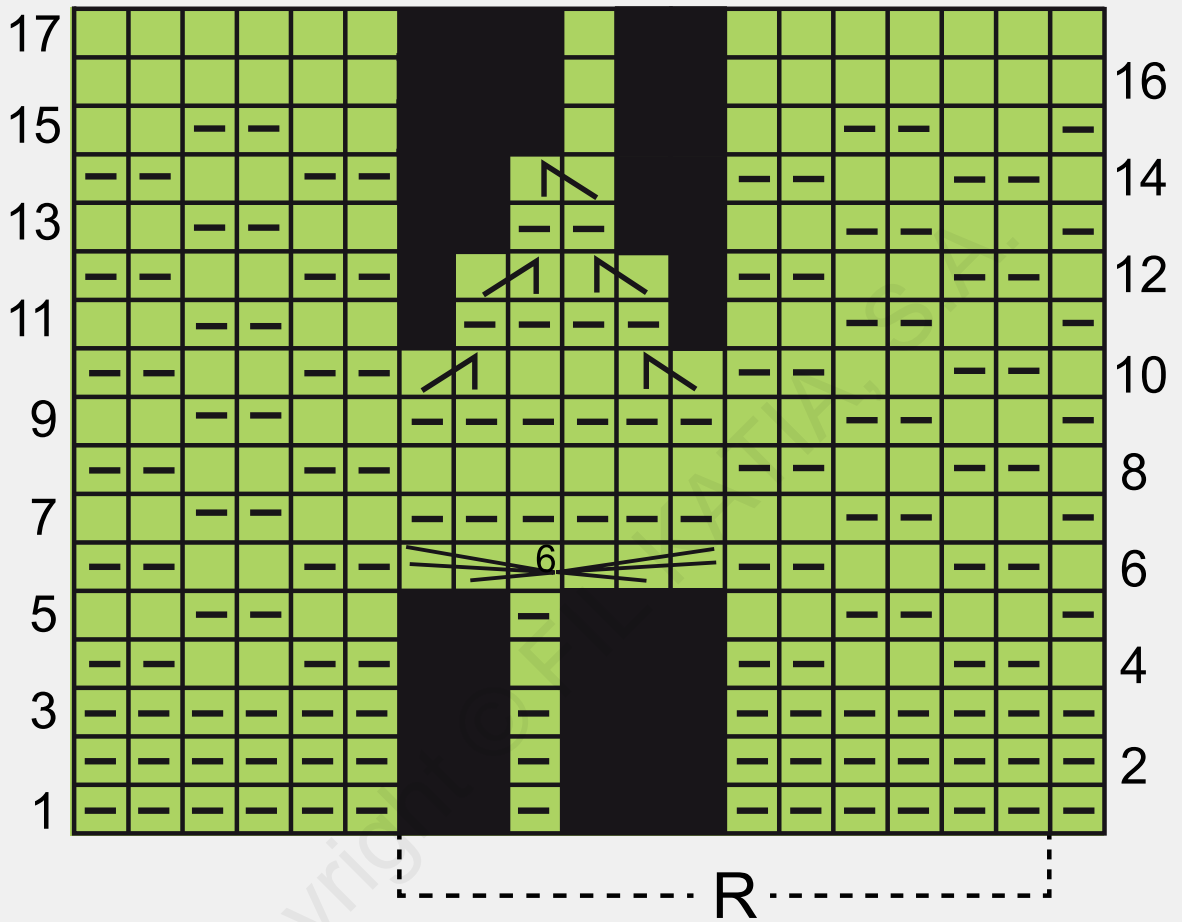
U 1 YO

/ K2 tog

GRAPH E



GRAPH F



R Repeat

□ K1

- P1

■ "no stitch" = white space in graph

↗ K2 tog

↘ slip 1 st, K1, and PSSO

6 work 6 sts into 1 st (= K1, P1, K1, P1, K1, P1)